

Model 3370

Shower bath

Shower, bath and treatment in one



SUREHANDS®



- Unique concept: shallow bath, stretcher shower and nursing table.
- Electrically-adjustable sides, deep/shallow and height adjustable.
- Very comfortable and easy to maintain.
- Moves on casters, mobile lift can pass underneath.
- Removable side bars available.



Specialists in innovative and reliable lift & care systems

www.surehands.com

● Dimensions and specifications

Maximum Safe Working Load 440.9 Lbs / 200 kg
(including patient, accessories and water)

Trolley mass 220.5 Lbs / 100 kgs

Trolley dimensions:

Trolley overall length 85.24 Inch / 2165 mm

Trolley overall width 30.51 Inch / 775 mm

Tub platform length 71.85 Inch / 1825 mm

Tub platform width 18.90 Inch / 480 mm

Wheel base 45.87 Inch / 1165 mm

Wheel track 27.17 Inch / 690 mm

Adjustment range:

Maximum overall height 46.61 Inch / 1184 mm

Trolley maximum height 43.66 Inch / 1109 mm

Minimum overall height 24.76 Inch / 629 mm

Trolley minimum height 21.81 Inch / 554 mm

Maximum patient platform height 36.57 Inch / 929 mm

Maximum tub depth 8.27 Inch / 210 mm

Electrical specifications:

Rechargeable battery 24V DC - 2.9 Ah

Battery charger input 110 V AC

Battery charge time: 6 hours (max)

Number of full load cycles 30

Time to raise or lower patient platform 30 sec

Time to raise or lower tub sides 30 sec

Drain flow rate 2.83 litres/sec

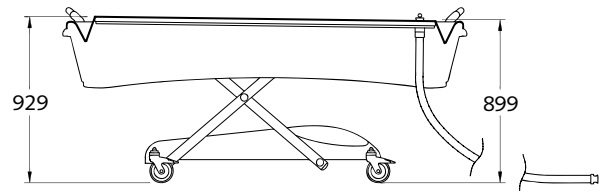
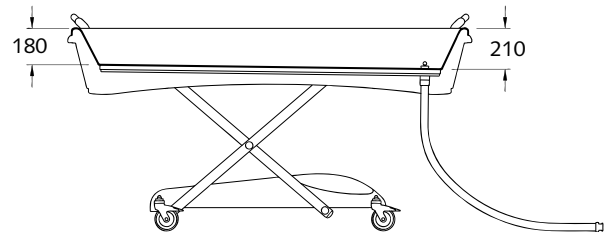
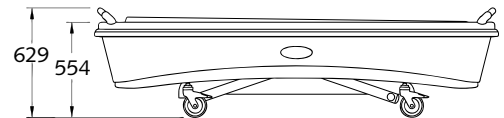
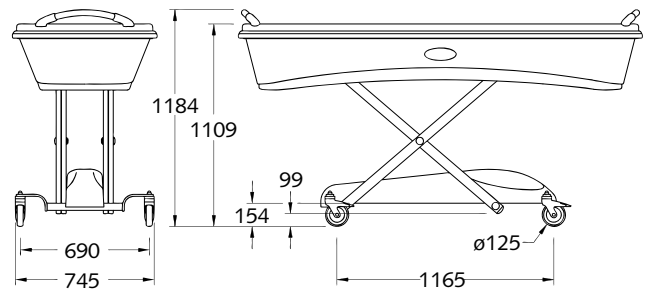
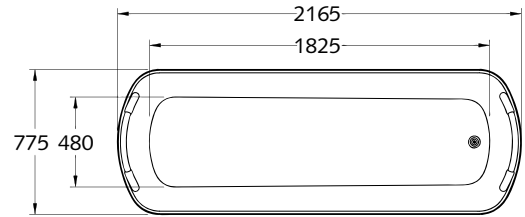
Accessories:

Spare battery

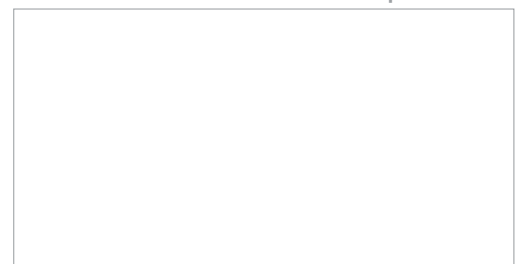
Foam wedge

Option:

Side bars in stainless steel



Local Representative



Lift & Care® is a registered trademark of
T.F. Herceg, Inc. dba SUREHANDS LIFT & CARE SYSTEMS.

© 13-02-2023 • Handi-Move • v2.3

SUREHANDS LIFT & CARE SYSTEMS

982 County Route 1, Pine Island, NY 10969

Tel: (800) 724-5305 • Fax: (845) 258-6634 • Website: www.surehands.com