

Model 2810-2815

Ceiling lift

Ideal for Independent Use



SUREHANDS®



- Lifts from floor
- Customized track systems make it possible to access all areas
- Independent transfers are possible with the **SureHands®** Body Support
- Accommodates Handi-Slings
- Mechanical emergency down feature that can be enabled by user
- Infra-red wireless remote control available
- Smooth stop and go
- Automatic stop at any desired spot

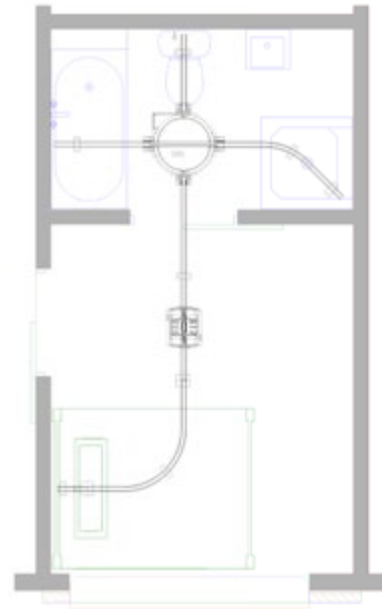
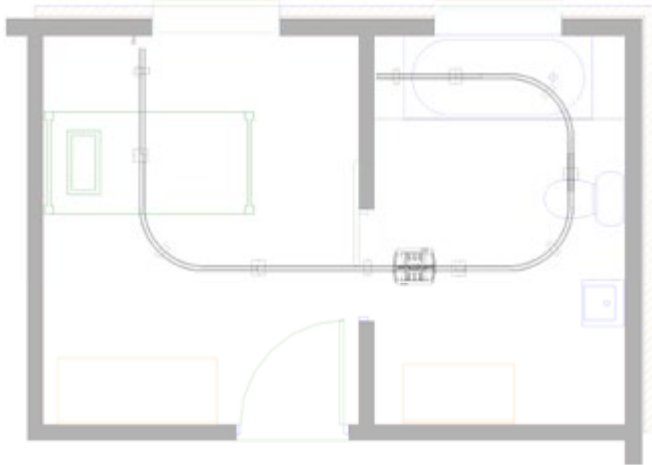
Specialists in innovative and reliable lift & care systems

www.surehands.com

● Technical specifications

Safe working load	440 lbs / 200 kg (118.11 inch / 3000 mm motorband: 352.74 lbs / 160 kg)
Batteries	2 x 12 V 8 Ah/ rechargeable
Standard motor band length	78.7 inch / 2000 mm (option: 118.11 inch / 3000 mm)
Rail System	aluminium, lacquered in white
Smooth stop and go	electronic
Cover	ABS
Emergency down	mechanical
Handcontrol 2810	watertight IP67 electric
Handcontrol 2815	infra-red
Number of lifts with fully charged batteries	160
Load and battery indications	visual and auditive
Charger	input 0.9 A 100-240 Vac, 50-60 Hz Class II
.....	output 24 Vdc Max 1.3 A (9940) Max 1.2 A (2541)

● Examples of routes



● Versions

2810 L

Lifting motor (up / down) and lateral motor (left/right)
With electric handcontrol.

2815 L IR

Lifting motor (up / down) and lateral motor (left/right)
With infra-red remote control.

Local Representative

Lift & Care® is a registered trademark of
T.F. Herceg, Inc. dba SUREHANDS LIFT & CARE SYSTEMS.

© 21-01-2025 • Handi-Move • v1.5